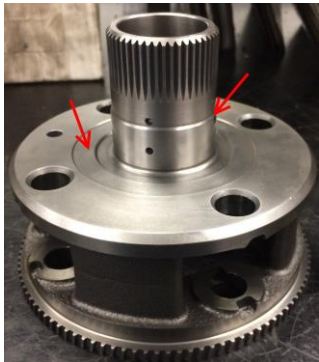
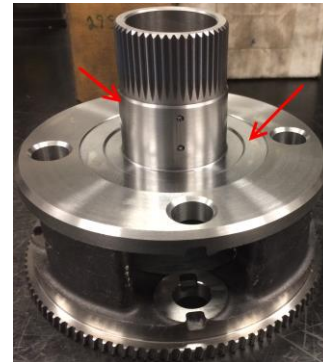

P2 Carriers for **5 Speed** Allison 1000/GM Transmissions. (LB7/LLY)

XCALLIBER P/N: P246C2A-X

For 5 speeds, there are two possible carriers that can exist in your transmission, an early or late style. The 29536971 P2 Carrier existed in early 5 Speed units. Allison upgraded the P2 Carrier in later 5 Speed units and went to a 29545240 carrier. The later 29545240 Carrier also led to changes in the P2 Sun Gear, P2 Spacer & P2 thrust bearing. See below photographs outlining the physical characteristics/differences of each carrier. Both carriers have two steps at the throat of the carrier, but the later style 29545240 has an extended bushing surface compared to the early style



29536971 - Early 5 Speed Carrier



29545240 - Late 5 Speed Carrier

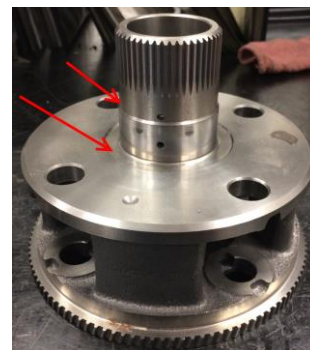
Our 5 speed P246C2A-X Carrier was engineered based on the later, more robust 5 speed design. If you are upgrading from an early 29536971, 5 Speed P2 Carrier with our P246C2A-X Carrier, you will need to update to the later style mating 5 speed parts listed below.

- **P/N 29545931:** Late 5 Speed P2 Sun Gear
- **P/N 29541728:** Late 5 Speed P2 Spacer
- **P/N 29541702:** Late 5 Speed P2 Thrust Bearing

P2 Carrier for **6 Speed** Allison 1000/GM Transmissions (LBZ, LMM, LML)

XCALLIBER P/N: P246C2B-X

When replacing a 6 speed Allison 1000 Transmission P2 Carrier, no additional parts are required when purchasing our 6 speed P246C2B-X, P2 Carrier. Currently there is only one version of this Allison 6 Speed P2 carrier (29539510). These carriers can be identified by the single step at the throat of the diameter, and a shorter bushing surface like that of the early style 5 speed carrier.



29539510 - 6 Speed Carrier
P246 Insert - Version 013119